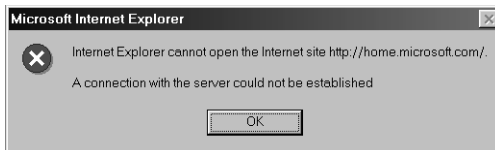


Important!

Please keep this card in a convenient place. It contains updated configuration and web site information.

If you are running the Web Point Internet Distribution Center (Web Point) in the Automatic Dialing Mode (default mode), you may experience a "Time Out" message when you connect to your "Home" page. This event occurs because the browser may time out before Web Point finishes making the dial connection. The messages will look similar to the ones below. (Messages may vary with different browser versions.)



"Time Out" message in Internet Explorer 4.0



"Time Out" message in Netscape Navigator 4.0

How does all this affect you?

If you get a "Time Out" message, in most cases, all you have to do is click the **Refresh** button on Internet Explorer or the **Reload** button on Netscape Navigator to connect to the site.

How does Web Point connect to the Internet?

Web Point is designed to operate in either of two modes:

- Automatic Dialing Mode - This is the default mode for Web Point.
 - Enabled. This setting tells Web Point to monitor your computer network for users who are trying to connect to the Internet. When a user types a URL, Web Point automatically dials the Internet Service Provider (ISP) and continually tries to connect the address the user typed.
 - Disabled. This setting prohibits Web Point from dialing until a Manual Control Mode request to dial is made.
- Manual Control Mode - Users can only gain Internet access when a request is made by clicking on the **Connect** button.

Which mode is better?

It depends. If you find that you need to limit access to users or that you experience "Time Out" messages often, you may want to switch to Manual Control Mode. In the Manual Control Mode, you can limit users to access the Internet only during the period when a manual connection is made. You can further restrict who can perform a manual connection by setting an administrative password.

Note: For more information on controlling user access to the Internet and setting an administrative password, see page 69, "Administrative Password" in the *Web Point Internet Distribution Center Reference Manual* located on the *EasyStart CD*.

How do I switch to Manual Control Mode?

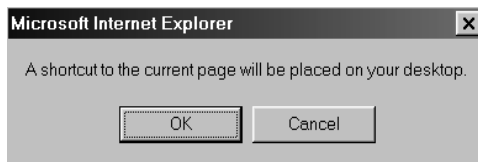
To switch to Manual Control Mode:

- 1 From your browser, type: 192.168.0.11 and press **Enter**.
- 2 The Web Point home page appears.
- 3 Click **Manual**.
- 4 Click **Connect** to start the dial connection. (To terminate the dial connection, click **Drop**.)

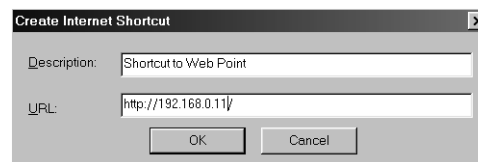
Do I have to type the URL each time I connect to Web Point?

No. If you choose to use the Manual Control Mode for Web Point, you can place a shortcut icon on your desktop. To make a shortcut, follow these steps:

- 1 From your browser, type: 192.168.0.11 and press **Enter**.
- 2 Place the cursor on a blank spot on the page and click the **right mouse button** on your mouse.
- 3 Click **Create Shortcut**. A message box appears similar to the ones below.



Internet Explorer 4.0 Message Box



Netscape Navigator 4.0 Message Box

- 4 Click **OK**.
- 5 A shortcut icon named "Configure" appears on your desktop.
- 6 Close the browser.
- 7 Then, to manually connect to the Internet, double-click on **Configure**, then click **Connect** to start the dial connection.

Trademarks

Home Director, the Home Director logo, "The Power Behind Intelligent Living", and Network Connection Center are trademarks of Home Director, Inc. All other trademarks used in this publication are the property of their respective owners.